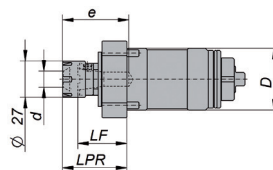


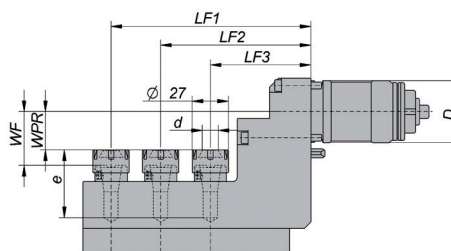
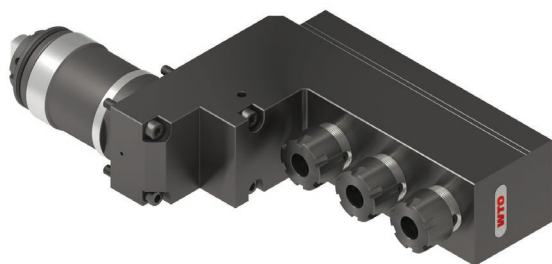
侧面钻铣动力刀座



型号	机床接口		刀具接口	尺寸/技术资料							
	D	机床		驱动	d	LPR	LF	e	n max. [rpm]	M [Nm]	i n1:n2
NF16-DNE-TS46A-048-E-A	46	B0265-II/266-II B0325-II/326-II/385 SS20/26/32	DIN1809	ER-16NF	0,5-10	48	36,5	49,5	8000	13	1:1
NF16-DNE-TS35A-067-E-A	35	S205A/206A	DIN1809	ER-16NF	0,5-10	67,5	56	55	8000	13	1:1

尺寸单位为mm. 包含锁紧螺帽和堵头螺丝ER-16NF

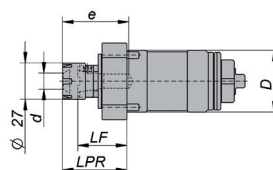
3轴端面钻铣动力刀座



型号	机床接口		刀具接口	尺寸/技术资料										
	D	机床		驱动	d	LF1	LF2	LF3	WPR	WF	e	n max. [rpm]	M [Nm]	i n1:n2
NF16-DNI-TS46A-075-E-X3-A	46	B0265-II/266-II B0325-II/326-II/385 SS20/26/32	DIN1809	ER-16NF	0,5-10	149	112	75	28,5	40,0	50,5	8000	13	1:1
NF16-DNI-TS35A-076-E-X3-A	35	S205A/206A	DIN1809	ER-16NF	0,5-10	138,5	107,5	76,5	17,0	28,5	50,5	8000	5	1:1

尺寸单位为mm. 包含锁紧螺帽和堵头螺丝ER-16NF

副轴用端面钻铣动力刀座



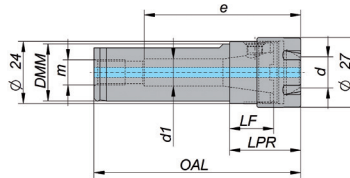
型号	机床接口		刀具接口	尺寸/技术资料							
	D	机床		驱动	d	LPR	LF	e	n max. [rpm]	M [Nm]	i n1:n2
NF16-DNE-TS42A-043-E-A	42	B0266-II/326-II	DIN1809	ER-16NF	0,5-10	43	31,5	58	8000	13	1:1




尺寸单位为mm. 包含锁紧螺帽和堵头螺丝ER-16NF

圆柱形刀柄

有圆柱柄及平面

灵活应用ER筒夹和nanoFlex® 适配器到镗刀座和套筒刀座



规格	型号	DMM	d min.	d max.	LF	LPR	OAL	d ₁	m	e			
ER-16NF	NF16-SSH-025-A	25	0,5	10	17	28,5	78,5	10,5	G1/8"	60,5	NF16-SCN-A	107520005	NF16-SPL-A

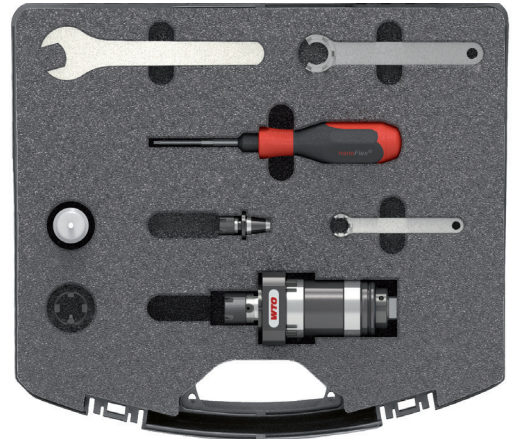
尺寸单位为mm. 包含锁紧螺帽和堵头螺丝ER-16NF

启动套装

NF16-DNE-TS46A-048-E-SK-A

包含:

- 1 NF16-DNE-TS46A-048-E-A 侧面钻铣动力刀座
- 1 NF16-SAD-ER11-A 筒夹适配器ER11M
- 1 NF16-SDR-A 驱动环 (包含NF16锁紧螺丝)
- 1 NF16-STW-A 扭矩螺丝刀
- 1 107516002 扳手SW19
- 1 107520005 扳手ER-16NF
- 1 107511005 扳手ER11M



启动套装

NF16-DNE-TS35A-067-E-SK-A

包含:

- 1 NF16-DNE-TS35A-067-E-A 侧面钻铣动力刀座
- 1 NF16-SAD-ER11-A 筒夹适配器ER11M
- 1 NF16-SDR-A 驱动环 (包含NF16锁紧螺丝)
- 1 NF16-STW-A 扭矩螺丝刀
- 1 107516002 扳手SW19
- 1 107520005 扳手ER-16NF
- 1 107511005 扳手ER11M

