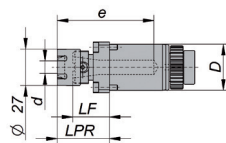


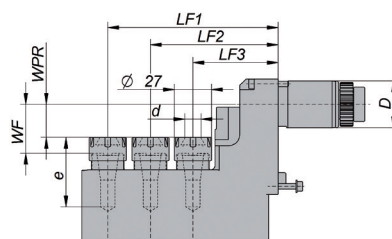
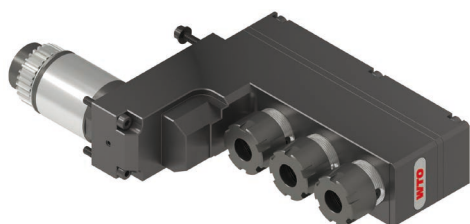
侧面钻铣动力刀座



型号	机床接口		刀具接口	尺寸/技术资料							
	D	机床		驱动	d	LPR	LF	e	n max. [rpm]	M [Nm]	i n1:n2
NF16-DNE-ST34A-038-E-A	34	SB 12/20 R SR 20/32 JII / 20R IV SV 20 R SW 20 SX 38	直齿	ER-16NF	0,5-10	38,5	27	71,5	8000	20	1:1

尺寸单位为mm. 包含锁紧螺帽和堵头螺丝ER-16NF

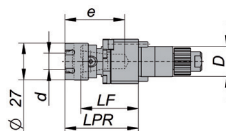
3轴端面钻铣动力刀座



型号	机床接口		刀具接口	尺寸/技术资料										
	D	机床		驱动	d	LF1	LF2	LF3	WPR	WF	e	n max. [rpm]	M [Nm]	i n1:n2
NF16-DNI-ST34A-062-E-X3-A	34	SB 12/20 R SR 20/32 JII / 20R IV	直齿	ER-16NF	0,5-10	124	93	62	24	35,5	50,5	8000	6	1:1

尺寸单位为mm. 包含锁紧螺帽和堵头螺丝ER-16NF

副轴用端面钻铣动力刀座



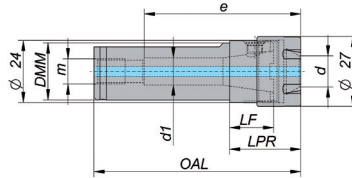
型号	机床接口		刀具接口	尺寸/技术资料							
	D	机床		驱动	d	LPR	LF	e	n max. [rpm]	M [Nm]	i n1:n2
NF16-DNE-ST22A-053-E-A	22	SB 12/20 R SR 20/32 JII SV 20 R SW 12 R II	直齿	ER-16NF	0,5-10	53,5	42	43,5	8000	10	1:1
NF16-DNE-ST22B-053-E-A	22	SR 20R IV SW 20	直齿	ER-16NF	0,5-10	53,5	42	43,5	8000	10	1:1




尺寸单位为mm. 包含锁紧螺帽和堵头螺丝ER-16NF

圆柱形刀柄

有圆柱柄及平面

灵活应用ER筒夹和nanoFlex® 适配器到镗刀座和套筒刀座



规格	型号	DMM	d min.	d max.	LF	LPR	OAL	d ₁	m	e			
ER-16NF	NF16-SSH-022-A	22	0,5	10	17	28,5	80,0	10,5	G ¹ / ₈ "	60,5	NF16-SCN-A	107520005	NF16-SPL-A

尺寸单位为mm. 包含锁紧螺帽和堵头螺丝ER-16NF

启动套装

NF16-DNE-ST34A-038-E-SK-A

包含:

- 1 NF16-DNE-ST34A-038-E-A 侧面钻铣动力刀座
- 1 NF16-SAD-ER11-A 筒夹适配器ER11M
- 1 NF16-SDR-A 驱动环 (包含NF16锁紧螺丝)
- 1 NF16-STW-A 扭矩螺丝刀
- 1 107516002 扳手SW19
- 1 107520005 扳手ER-16NF
- 1 107511005 扳手ER11M

